

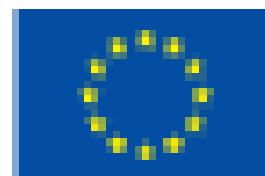


eTwinning
SCHOOL

2025-2026



eTwinning



Funded by
the European Union







This map shows the countries participating in eTwinning in 2025

* This declaration is without prejudice to positions on status, and to the right to self-determination, of the peoples of Cyprus and the Middle East. It also does not prejudice the position of the Holy See.





eTwinning SCHOOL MISSION

eTwinning Schools have a commitment to shared leadership

In eTwinning Schools, leadership is a shared process, both in terms of organisational responsibility and decision-making processes. The school principal and teacher leaders understand the possibilities offered by eTwinning both at a pedagogical and professional level and actively support all staff to become involved in eTwinning activities.

eTwinning Schools are collaborative

Teachers work together as a team to plan their eTwinning and other pedagogical activities and share their experiences and practices with their colleagues, both inside and outside their school. They collaborate on providing an eTwinning action plan and use it to drive innovation and change in their school and beyond.

Students in eTwinning Schools are agents of change

Students have an active role to play in the development of an eTwinning School. They promote eTwinning to teachers (both those who are already active and those who are not yet involved) and parents. Pupils act both as drivers and sounding boards for innovation in pedagogy and the use of technology.

eTwinning Schools are models for other schools

eTwinning Schools are ambassadors for other schools in their area/region by actively promoting eTwinning and disseminating their achievements through open days, information sessions, and mentoring activities. They are proactive in creating professional development opportunities open to other schools in their area.

eTwinning Schools are inclusive and innovative learning organisations

eTwinning Schools are committed to inclusivity at every level and actively seek ways to create an inclusive environment for students of every ability and culture, their parents and the wider community. Teachers in eTwinning Schools commit to developing the whole school as a learning organisation. They use eTwinning to support and deliver their curriculum using innovative pedagogical models which include, among a variety of approaches, collaborative learning, student-centred education, flexible approaches to learning times and learning spaces.



Co-funded by the European Union

Erasmus+ Enriching lives, opening minds

European School Education Platform - <https://school-education.ec.europa.eu>





AWARDED THE TITLE OF eTwinning School 2025-2026





eTwinning
SCHOOL

Zespół Szkół nr 2
im. Władysława Orkana
w Szamotach

AWARDED THE TITLE OF

eTwinning School
2025-2026



Co-funded by
the European Union

Erasmus+
Enriching lives, opening minds.

OGŁOSZENIA
SAMORZĄDU UCZNIOWSKIEGO

[illegible][illegible]

eTwinning
SCHOOL
MISSION

eWinning Schools are leaders in the eWinning world. These **school management** and **teacher leaders** recognise the importance and values of eWinning and embed it in their **school's policies, practices** and **professional development**.

in a Twinning Schools, teachers work together to provide a wider and richer educational experience for all.

eTwinning Schools are **models** that inspire and guide other schools to attain the levels they themselves have achieved. They ensure that the promise of change in education is maintained, so that pupils are nurtured to become **better people, better learners, and more active citizens**.

eTwinning Schools have a commitment to shared leadership

In eTwinning Schools, leadership is a shared process, both in terms of organisational responsibility and decision-making processes. The school principal and teacher leaders understand the possibilities offered by eTwinning both at a pedagogical and professional level and actively support all staff to become involved in eTwinning activities.

eTwinning Schools are collaborative:
Teachers work together and learn to plan their eTwinning and other pedagogical activities and share their experiences and practices with their colleagues both inside and outside their schools. They collaborate on projects, develop learning action plans and use it to drive change in their schools and

Students in elementary schools are agents of change.

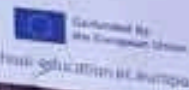
Students have an active role in the development of an e-learning Site. e-learning for teachers (both those active and those who are not yet prepared). Parents act both as drive boards for innovation in pedagogy and technology.

eTwinning Schools are models for other schools

referring schools are ambassadors in their area by advertising and disseminating the through open days, information seminars and activities. They are proactive in creating professional development opportunities open to other schools in their area.

eTwinning Schools are inclusive and innovative learning organisations

Teachers are committed to inclusivity at every step and actively seek ways to create an inclusive environment for students of every ability and culture. Their parents and the wider community are also committed to supporting the school's efforts to develop a learning environment that is inclusive for all. They are committed to support and deliver their curriculum using a variety of pedagogical models when needed, including differentiated instruction, collaborative learning, student-centred education, flexible approaches to learning times and learning spaces.



Erasmus





eTwinning SCHOOL MISSION

eTwinning Schools are leaders in the eTwinning world. Their **school management** and teacher leaders recognise the importance and values of eTwinning and embed it in their **school's policies, practices and professional development**.

In eTwinning Schools, teachers **work together** to provide a wider and richer educational experience for all.

eTwinning Schools are **models**: they inspire and guide other schools to attain the levels they themselves have achieved. They ensure that the promise of change in education is maintained, so that pupils are nurtured to become **better people, better learners, and more active citizens**.

eTwinning Schools have a commitment to shared leadership

In eTwinning Schools, leadership is a shared process, both in terms of organisational responsibility and decision-making processes. The school principal and teacher leaders understand the possibilities offered by eTwinning both at a pedagogical and professional level and actively support all staff to become involved in eTwinning activities.

eTwinning Schools are collaborative

Teachers work together as a team to plan their eTwinning and other pedagogical activities and share their experiences and practices with their colleagues, both inside and outside their school. They collaborate on providing an eTwinning action plan and use it to drive innovation and change in their school and beyond.

Students in eTwinning Schools are agents of change

Students have an active role to play in the development of an eTwinning School. They promote eTwinning to teachers (both those who are already active and those who are not yet involved) and parents. Pupils act both as drivers and sounding boards for innovation in pedagogy and the use of technology.

eTwinning Schools are models for other schools

eTwinning Schools are ambassadors for other schools in their area/region by actively promoting eTwinning and disseminating their achievements through open days, information sessions, and mentoring activities. They are proactive in creating professional development opportunities open to other schools in their area.

eTwinning Schools are inclusive and innovative learning organisations

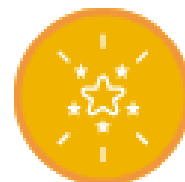
eTwinning Schools are committed to inclusivity at every level and actively seek ways to create an inclusive environment for students of every ability and culture, their parents and the wider community. Teachers in eTwinning Schools commit to developing the whole school as a learning organisation. They use eTwinning to support and deliver their curriculum using innovative pedagogical models which include, among a variety of approaches, collaborative learning, student-centred education, flexible approaches to learning times and learning spaces.

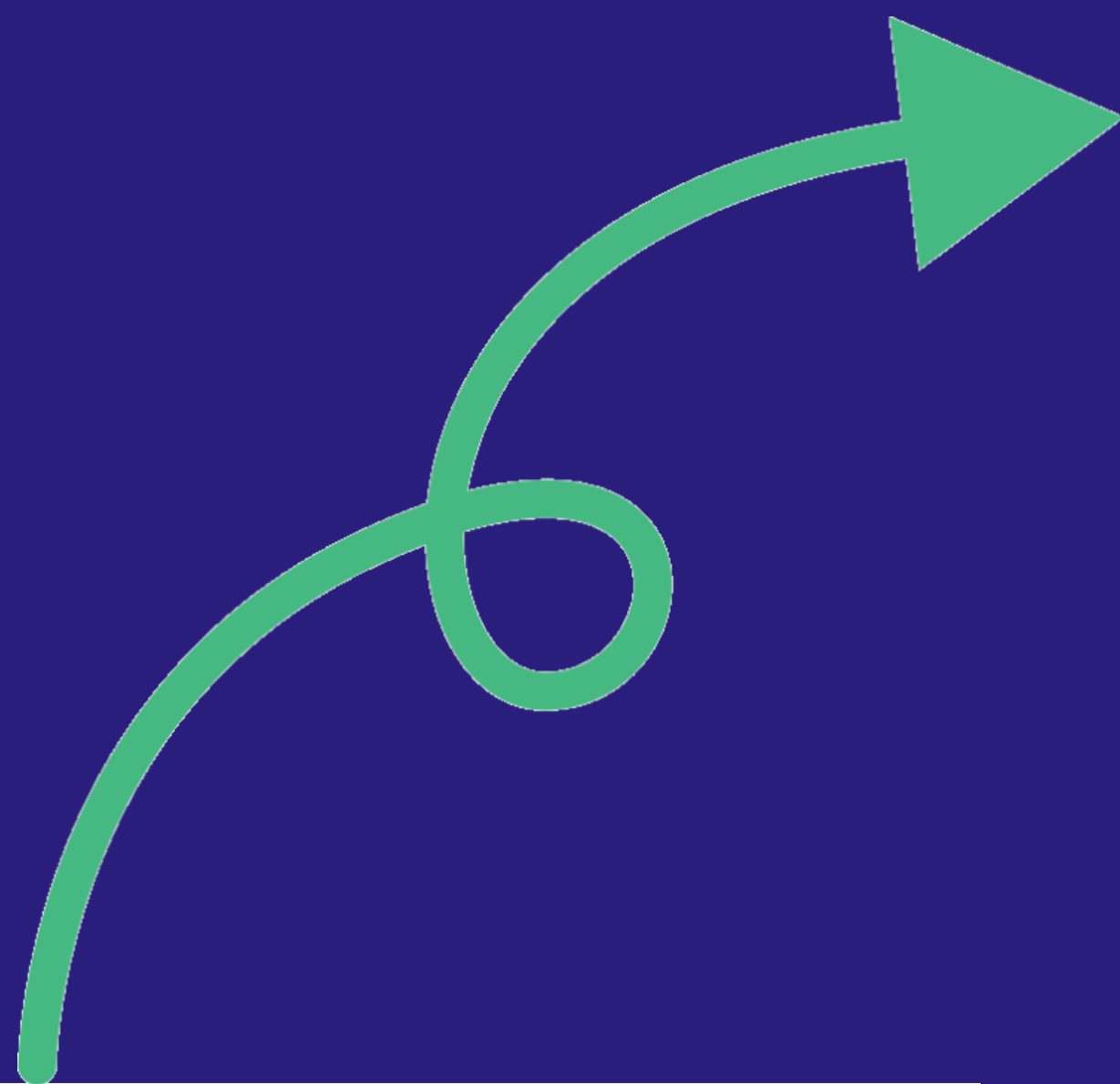




06 Feb 2023

**Getting to know a
mathematician from my
country...** გაიცანით ჩემი
ქვეყნის მათემატიკოსი.



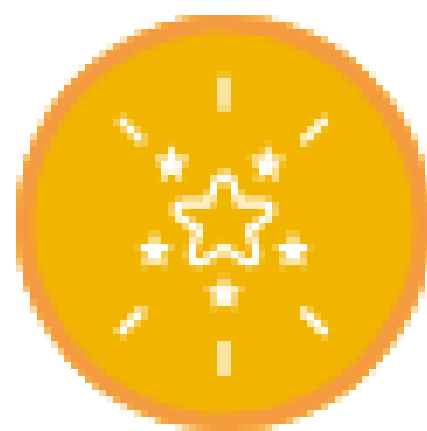


Eco-Friendly Innovative Classes



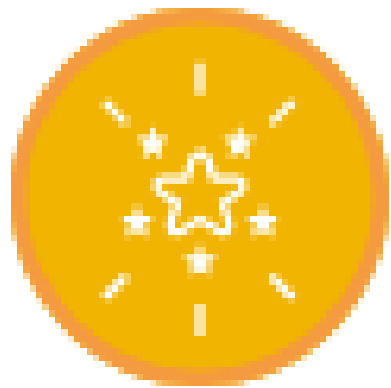


Plants=Life



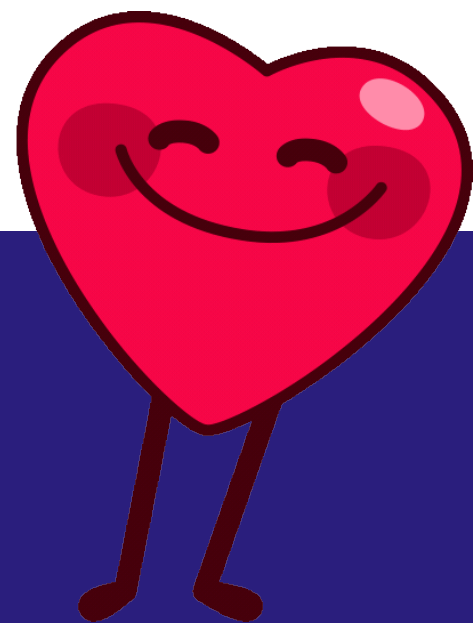


Me and my country



**Erasmus+ VET, Szczecin -
Sewilla**

**Erasmus+ VET Malaga -
Szczecin**



The school offers foreign internships



Erasmus+

**Akredytacja Erasmus+ VET na lata 2021-2027
2020-1-PL01-KA120-VET-000095752**



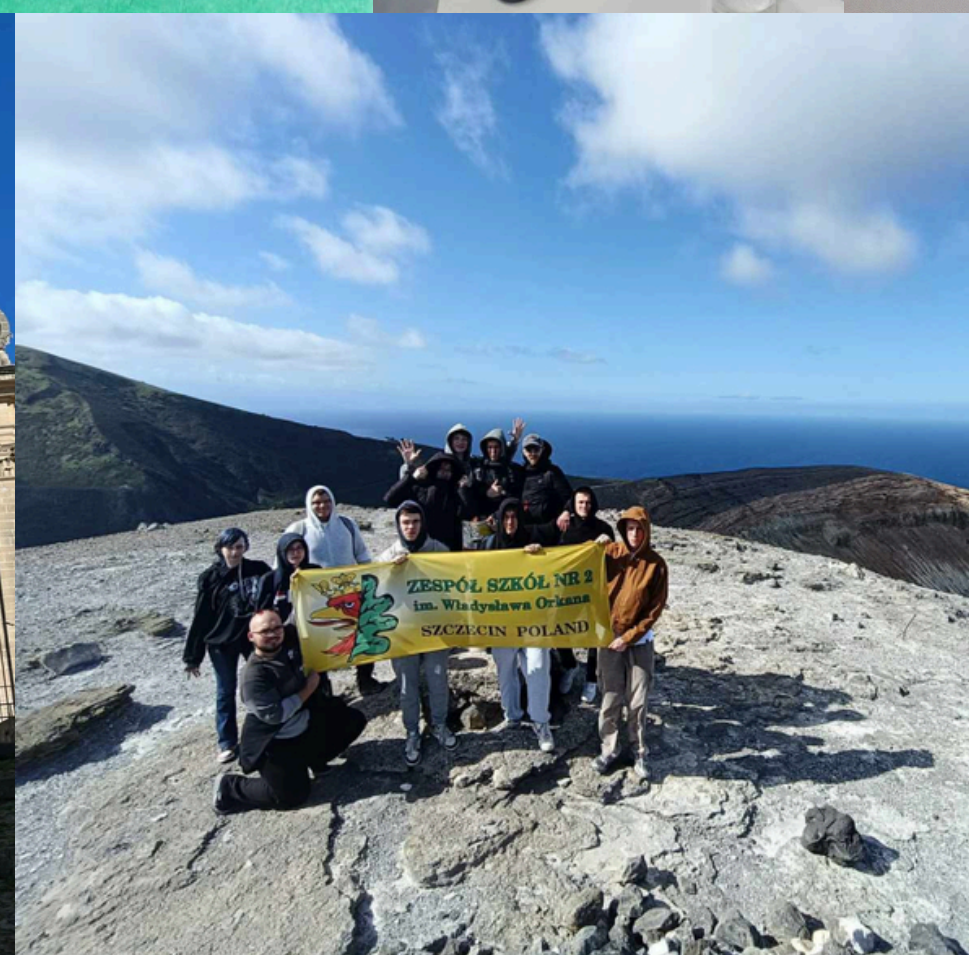
Akredytacja Erasmus+ VET na lata 2021-2027
2020-1-PL01-KA120-VET-000095752



Malaga 2024



Akredytacja Erasmus+ VET na lata 2021-2027
2020-1-PL01-KA120-VET-000095752



Akredytacja Erasmus+ VET na lata 2021-2027
2020-1-PL01-KA120-VET-000095752



EUROPEAN COMMISSION
DIRECTORATE-GENERAL FOR EDUCATION, YOUTH, SPORT AND CULTURE

Youth, Education and Erasmus+
Schools and Multilingualism

Brussels
EAC.B.2.002/PDB

Dear Principal,

I would like to congratulate you and your colleagues for being awarded the label of **eTwinning School 2025-2026**.

You have received this prestigious accolade because you have shown consistent and clear commitment to the true meaning of the eTwinning programme. Under your leadership, your school has used digital and creative tools to improve the educational outcomes of your students and you have engaged in fruitful cooperation with other eTwinning schools.

Moreover, this award recognises your efforts in promoting the continuous professional development of your staff so they can improve and update their skills for the benefit of the students.

Additionally, because of working with schools and communities across Europe, you contribute to the sense of a united European community. I would also like to congratulate you on this success.

Finally, I would request you to act as an eTwinning role model and support other schools in their attempts to take part in this important project.

Once again, congratulations on this achievement.

Yours faithfully,

Mónika KEPE-HOLMBERG
Head of Unit